

perma lubrication systems for

Asphalt mixing plants

perma-tec GmbH & Co. KG
Hammelburger Str. 21
97717 EUERDORF
GERMANY

sales@perma-tec.com
www.perma-tec.com



The Expert in Lubrication Solutions

perma

perma lubrication systems for

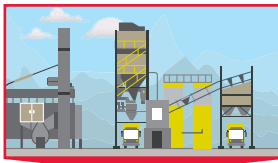
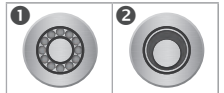
Asphalt mixing plants

Processing mineral rocks, mineral dust, binders (bitumen) and additives into asphalt mixture is a complex procedure. In addition to many safety aspects, staff and equipment are faced with tough challenges, such as varying temperatures, extreme dust and dirt, and hard-to-reach lubrication points. Continuous lubrication of machine elements is an important factor to prevent equipment breakdown and to increase economic efficiency.

Lubrication points

❶ Roller bearings

❷ Sliding bearings / Sliding guides



Raw material processing

→ Predosage	Metering devices, conveyors	✓	✓
→ Drying	Drum driers	✓	
→ Transport	Bucket conveyor, bucket elevator	✓	✓



Final processing and loading

→ Weighing	Mineral flaps	✓	✓
→ Mixing module	Mixing shafts, mixer flaps	✓	✓
→ Loading	Concrete travelling buckets, loading flaps		✓



Dedusting

→ Filtering	Exhauster, trough screw conveyor	✓	
→ Conveying	Screw conveyor	✓	

Challenges



- Dust, dirt, vibration
- Varying temperatures
- High energy costs



- Different lubrication points require different lubricants and lubricant amounts



- Hard-to-reach lubrication points
- Rotating machine parts hazard

Advantages of automatic lubrication

- ✓ **Continuous relubrication** at short intervals **reduces wear** and **seals** lubrication points **to prevent contamination from dust and dirt**.
- ✓ **Scheduled exchanges** of lubrication systems while machines are running **reduces staff and material costs** and increases economic efficiency.
- ✓ Automatic lubrication away from dangerous areas **increases workplace safety**.
- ✓ Individual lubrication **reduces energy costs by up to 10%**.

Reference

AMS 
AMS Asphaltmischwerke
Main-Saale GmbH + Co. KG
Schweinfurt

Solutions

Direct mounting on lubrication point: e.g. perma NOVA

- Electronic control unit with temperature compensation
- System operates reliably from -20 °C to +60 °C
- Dust-tight and protected against water jets

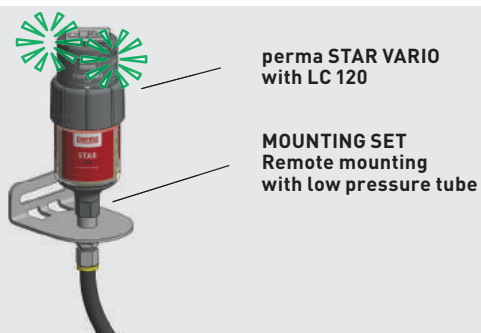


Art. No. 101476



Remote mounting to lubrication point: e.g. perma STAR VARIO

- For lubrication points with strong vibration / shocks (isolation of lubrication system)
- When workers' safety is at risk: Mounting in safe areas
- For hard-to-access lubrication points



Art. No. 101482



Would you like more information on perma products?

- Detailed product information in our **perma Catalogue**
- Visit our website **www.perma-tec.com**

Applications



Pillow block lubrication on an exhauster



Lubrication of thrust roller bearings on a drum dryer



Footstep bearing lubrication on a filler



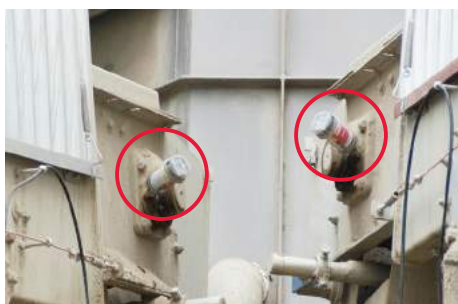
Pillow block lubrication on an RA-Elevator



Flange bearing lubrication on a trough screw conveyor (dedusting)



Lubrication of mixing shafts and mixer flaps



Roller bearing lubrication on conveyors



Lubrication of thrust roller bearings on a parallel drum



Roller bearing lubrication on a filler elevator

Individual solutions

perma Product portfolio



Solutions for all types of applications

perma Lubricants



Large selection of high quality lubricants to meet the requirements of your equipment

perma Accessories



Extensive range of accessories and connecting parts for your equipment

perma SERVICE



Project planning, installation and maintenance

perma SOFTWARE



Calculation of lubricant amount: • **perma SELECT**
Maintenance Lubrication Program: • **perma MLP**